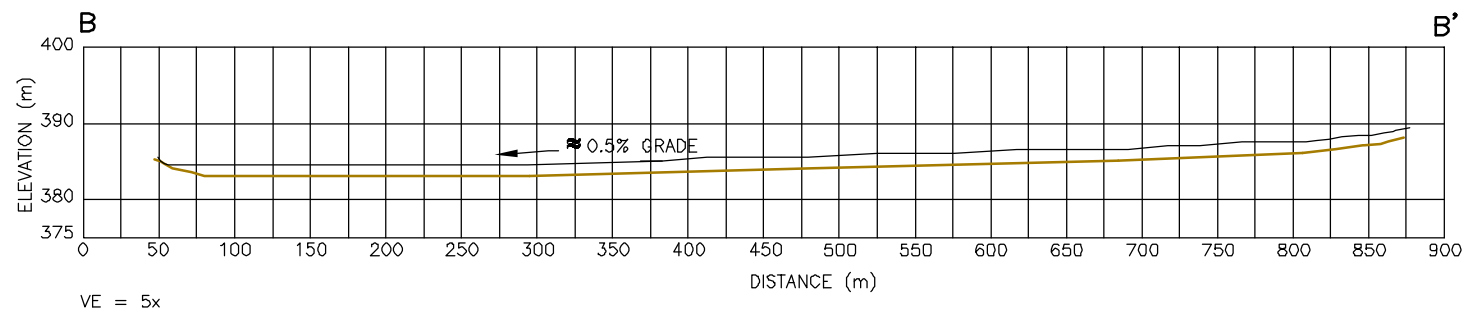
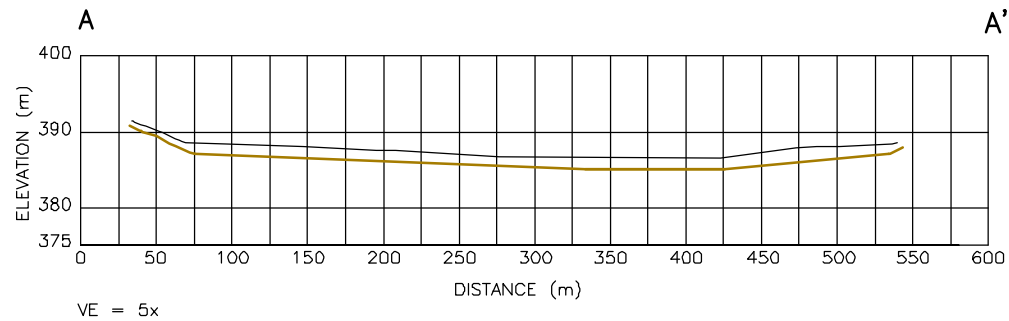
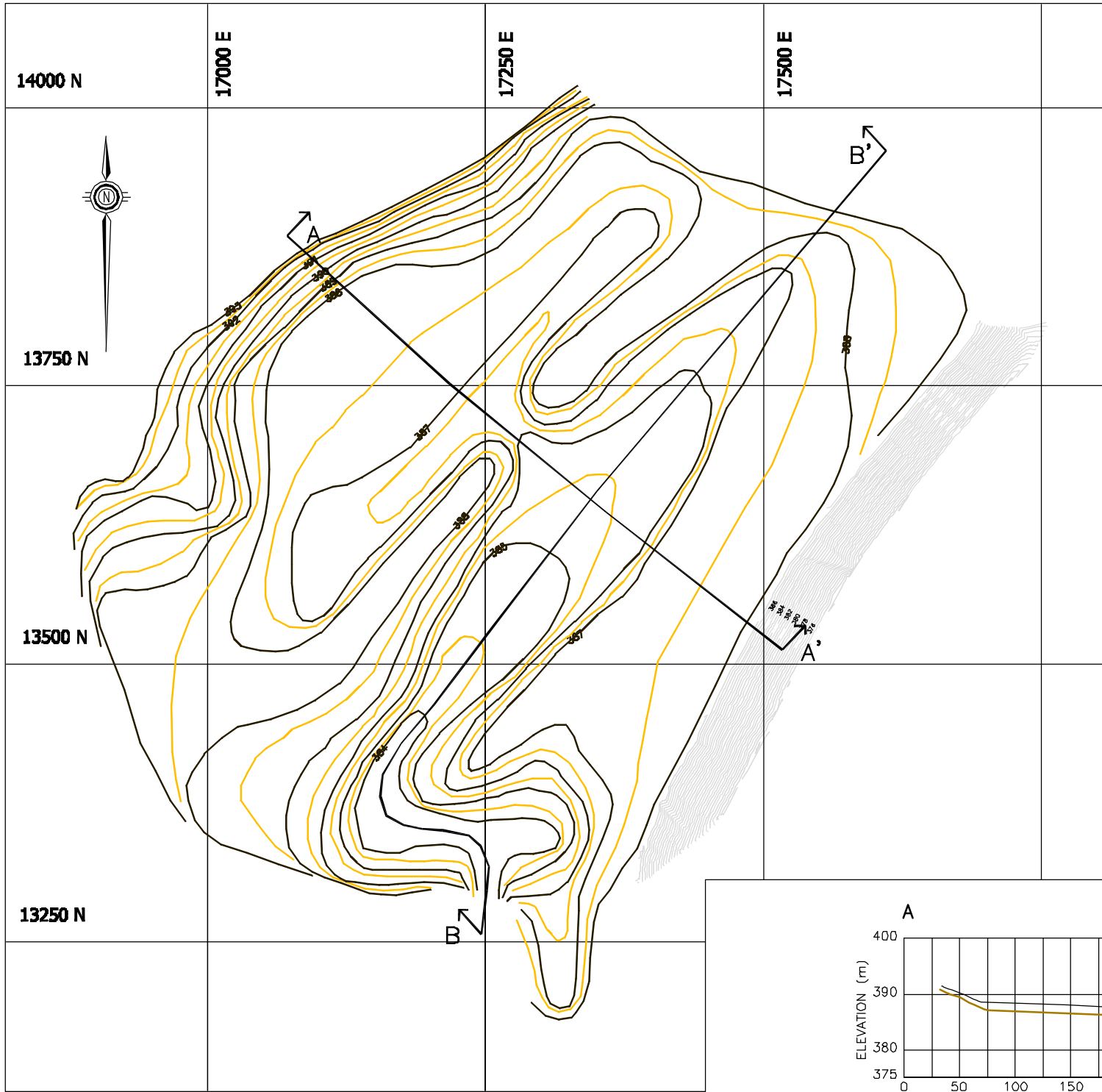


0255-008-09 012 FIGURE\_18.dwg



CLIENT: NANISIVIK MINE,  
A DIVISION OF CANZINCO LTD.

### LEGEND

- GRADED TAILINGS SURFACE
- PROPOSED TOPOGRAPHY OF RECLAMATION COVER

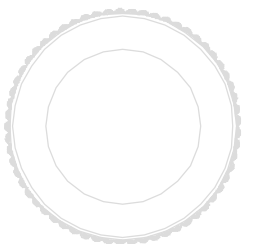
NOTE:

- 2003 SURFACE CELL TOPOGRAPHY/BATHYMETRY SURVEYED BY S.A.S. SEPTEMBER, 2003
- GRADED TAILINGS SURFACE DERIVED FROM FIGURE 17.

AS A MUTUAL PROTECTION TO OUR CLIENT, THE PUBLIC AND OURSELVES, ALL REPORTS AND DRAWINGS ARE SUBMITTED FOR THE CONFIDENTIAL INFORMATION OF OUR CLIENT FOR A SPECIFIC PROJECT AND AUTHORIZATION FOR USE AND/OR PUBLICATION OF DATA, STATEMENTS, CONCLUSIONS OR ABSTRACTS FROM OR REGARDING OUR REPORTS AND DRAWINGS IS RESERVED PENDING OUR WRITTEN APPROVAL.

REV.	DATE	REVISION NOTES	DRAWN	CHECKED	APPROVED

SCALE:	AS SHOWN
DATE:	MAR 2004
DRAWN:	CJT
DESIGNED:	GKC
CHECKED:	JWC
APPROVED:	JWC



PROJECT	WEST TWIN DISPOSAL AREA CLOSURE PLAN		
TITLE	SURFACE CELL RECLAMATION COVER GRADING PLAN		
PROJECT No.	DWG No.	REV.	
0255-008-09	18	0	



**BGC ENGINEERING INC.**  
AN APPLIED EARTH SCIENCES COMPANY  
Calgary, AB Phone: (403) 250 5185